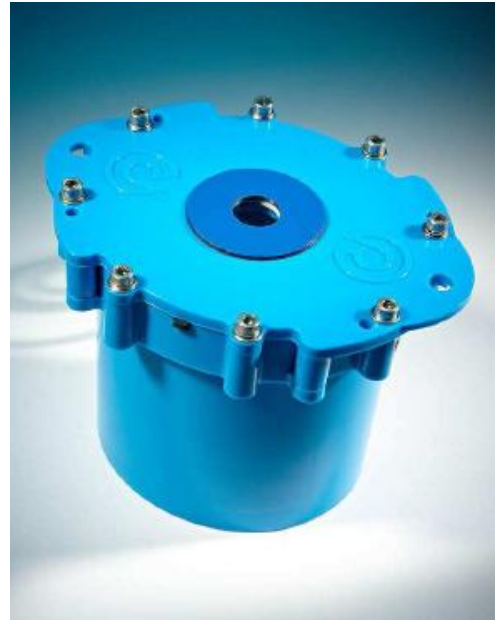


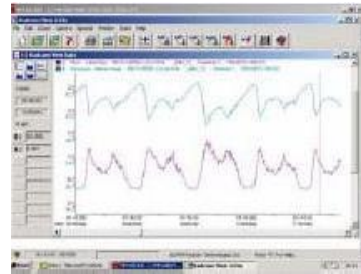
Multi Log LX Datalogger:

Regarding to have one or two digital input and one analog pressure input and low price of telemetry via SMS, Multi Log LX is a very economical datalogger. Advanced SMS data compression techniques enables all the data recorded in a defined time interval within a day to be transferred via one SMS. SMS telemetry can successfully operate in poor signal strength locations where more advanced "GSM data" communications may be difficult. LX is ideal for monitoring flow and/or pressure to assess demand, leakage and conformance. For preparing reports, drawing graphs, data analyzing and saving, the **Rad Log for windows** software is used. This software is compatible with all **Radcom** softwares.



Features:

- ✓ Daily data transferring of two channels via SMS and the possibility of data communicating via GPRS.
- ✓ Local data download via Infra-Red interface into Laptop, PC or PDA
- ✓ 5 years internal battery life
- ✓ External antenna for greater signal
- ✓ Bi-directional digital flow input
- ✓ Memory 48,720 readings
- ✓ Tough ABS plastic molded case.
- ✓ IP:68
- ✓ Bi-directional flow input and analog pressure input
- ✓ Changeable sampling and data recording time interval (1 min to 24 hours)
- ✓ Two independent recording systems
 - For ordinary applications, the main recording system records and transfers data via SMS every 15 min (Programmable to 24 hours). The secondary data recorder is able to record data every 1 min. The system is perfect for analyzing water network in short time intervals.



PRODUCT SPECIFICATION

Sensor Input Options	Digital	One bi-directional pulse input for Flow Reed switch contact closure type or other non powered sensors incl Kent LRP, PD10 with ext battery box, Aquamag/Magmaster. (Option) Two single-directional pulse inputs for Flow logging, via a single 4 pin mil connector. Up to 64 pulses per second.
	Analogue	(Option) Internal Pressure Transducer 0-20 bar / 0-200 metres head / 0-300 psig, repeatability $\pm 0.1\%$.
Logging Features	Memory	Primary recording 48,720 readings. Can be programmed to read continuously (cyclic mode) or for a specific period of time (block).
	Frequency	Fixed 15 minute sample rate as standard (1 SMS/day per 2 ch), (Option) Variable sample rate 1 to 59 mins, then 1 to 24hrs.
	Alarms	Minimum or maximum duration-triggered threshold alarm per channel. 16 Alarms per logger. Each alarm out comment field 16 characters. Can be programmed to auto dial up to 4 telephone numbers on alarm with telemetry option (ie 1 per alarm).
	Logger ID	Up to 8 alphanumeric characters – can be programmed with GIS number. Also readable factory set serial number in firmware.
	Site ID	Up to 127 alphanumeric characters.
	Clock	On board 24 hour real time clock with date facility.
	Count and Event Logging Modes	Count and Event logging modes independent for both recordings (Event logging only applicable to “GSM data” telemetry version).
Communication	Serial	RS232 by Infra-Red reading head for connection to PDA hand held programming and data collection unit, laptop, or desktop PC 9,600 Baud.
	Internal Cellular modem (option)	2-way SMS Dual band 900/1800MHz Standard (Option) Quad band for USA incl 1900MHz and 850MHz bands GPRS option (1 email/day) Auto processed from Office outlook inbox GPRS can send email data down to every 5 mins, with reduced battery life .
Physical	Dimensions	105H (125H with int pressure sensor) x 115W x 105D mm.
	Construction	Tough ABS plastic enclosure (colour Blue).
	Weight	590 grams (1.3lb)
	Operating Temp	-20 to +70°C (-5 to +160°F)
	Ingress protection	IP68 submersible
	Power	Lithium-ion cell operational for 5 years under normal operating conditions, complete with low battery alarm.

HWM reserve the right to change the specification of any product without prior notice.

/ G = Glanded flow
/ B = Bulgin flow connector option
(Mil connector std)

R
68

ip1
ip2
ip3
0

0

/

1= Portable
6= SMS/GPRS cellular modem

1= 1 input
2= 2 inputs
3= 3 inputs

1=1 or 2 x digital pulse inputs
6=1 x internal pressure

0= No Antenna
1= External Antenna
2= Internal Antenna

0= Variable Sample Rate (can send many SMS/day)
1= Fixed 15 Minute Rate (std SMS option)
0= No user configurable Power windows

0= No cell Modem, ie Portable
1= Dual Band, SMS
2= Dual Band, GSM data (requires external power option)
4= Quad Band, SMS
5= Quad Band, GSM data (requires external power option)
6= Quad Band, GPRS

Typical logger variants available upon request